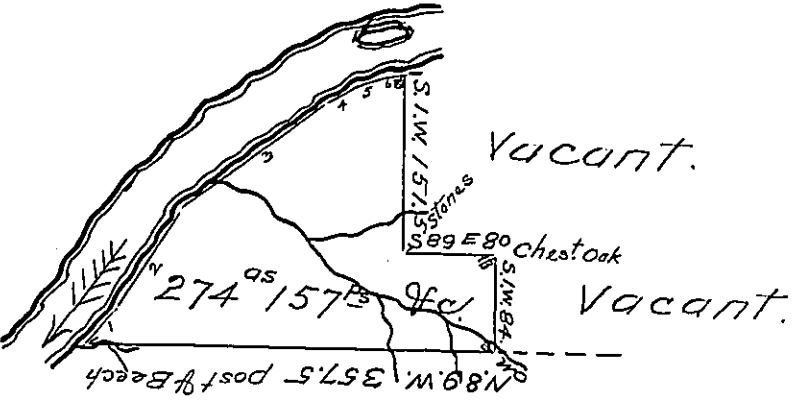


Courses & distances up }  
River from post of Beech }

- No. 1 - N. 46. E. 42
- " 2 N. 33 E. 96
- " 3 N. 54 E. 160
- " 4 N. 60 E. 34
- " 5 N. 71 E. 22
- " 6 N. 82 E. 19.6 To Herk



No 1138  
Warranted To John Nicholson }

Draft of a Tract of land situate in Cranberry Township, Venango county, South & East of, & adjoining the Allegheny River, about two miles above the mouth of French Creek.

Surveyed 14<sup>th</sup> June 1839, in pursuance of a warrant granted to George R. Espy, dated 21<sup>st</sup> May 1839

Richd Irwin D.S.

Jacob Sallade Esquire }  
Surveyor General of Pa. }

IN TESTIMONY that the above is a copy of the original remaining on file in the Department of Internal Affairs of Pennsylvania, made conformably to an Act of Assembly approved the 16th day of February, 1833, I have hereunto set my Hand and caused the Seal of said Department to be affixed at Harrisburg, this twenty ninth day of September 1904.

*George B. Pearson*  
Secretary of Internal Affairs.